

Enhancing the Nursing Undergraduate Experience in Community Health Nursing: A University and Public Health Partnership

5th National Community Health Nurses Conference

May 18, 2011

Ruth Schofield, RN, MSc(T), McMaster University

Cyndy Johnson, RN, MSc CCHN (C), City of Hamilton Public Health Services

Christina Bradley, RN, BScN, Niagara Region Public Health



Points of Discussion

- The Context
- CASN Guidelines for Quality Community Health Nursing Clinical Placements
- Community Health Nursing Education Course Design
- A Toolkit for Community-University Collaboration
- Enabling and Challenging Factors
- Next Steps



Background

- University Public Health Partnership revisited
- Existence of Canadian Community Health Nursing Standards, Pan Canadian Public Health Core Competencies and Public Health Nursing competencies
- Community Health Nursing Education Curriculum change at McMaster Mohawk Conestoga BScN program
- Work of CASN



Setting the Context

Public Health Supports:

- Strategic partnerships
 - Teaching Health Unit (Hamilton)
- Formal clinical appointments
- Preceptor Resource Networks
- Formal student orientation to the organization
- Faculty/student/agency advisor meeting
- Competencies: Core Public Health, Discipline-specific, Inter-professional



Setting the Context

Academic Supports:

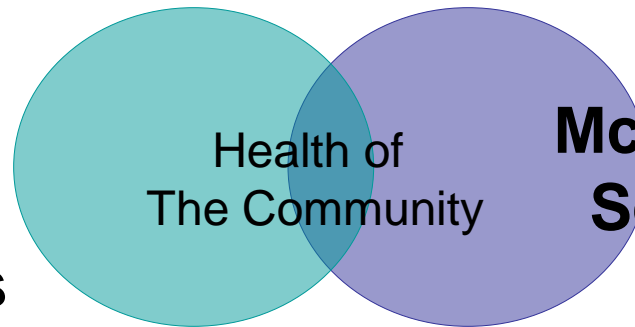
- School of Nursing values
- CASN Guidelines
- Community Health Nursing Education course design
- Faculty orientation
- Clinical supervision



Collaboration

Shared Vision: Excellence in Nursing Preparation

Public Health
Standards
&
Competencies



McMaster University
School of Nursing
Values

Inspire

Engage

Lead



Guidelines for Quality Community Health Nursing Clinical Placements

(CASN, 2010)

1. Community Health Nursing Identity
2. Community Health Nursing Scope of Practice
3. Competent Well-Prepared Preceptor
4. Supportive Environment for Student Learning
5. Community-Academic Partnership



Community Health Nursing Education Course Design

- Prerequisite Social Determinants of Health Course
- 52 hours/term professional practice course (40 hours in clinical placement)
- Student team approach (4)/project
- Clinical tutor/Agency Advisor
- Clinical lab – epidemiology, practice tools
- Assessing/interpreting/responding



Community Health Nursing Education Learning Partnership

Social Justice

Inspire

Engage

Lead

Empowerment

Primary Health Care principles

Epidemiology

Ottawa Charter

Student

Health of the Community

Faculty

Agency Advisor

Population Health

Program Evaluation

Social Marketing

Determinants of Health

Canadian Community Health Nursing standards of practice



Professional Practice Ends-in-View

Explore

- Determinants of Health, Epidemiology
- Community Engagement/empowerment
- Population health & Primary Health Care principles
- Multiple Health Promotion approaches
- Social Justice

Enact

- Nursing roles consistent with the Ottawa Charter, Canadian Community Health Nursing standards of practice, Public~Community Health Nursing Roles and Responsibilities



Public Health Nursing Clinical Experiences

Inspire



'Beyond the Haircut'



Westvale Trailblazers, Westvale P.S., Waterloo, Ontario

'Stepping it Up'

Engage



'Positive Parenting'

Stop an injury

B4
it happens

Injuries and the misuse of alcohol and other drugs impact our Niagara community. Please join us for a networking opportunity to collaborate with other professionals to identify local strategies that will make Niagara a safer community.

To register please fill out the attached form and email to Brenda Tucker at: brenda.tucker@niagararegion.ca or fax to her attention at 905-688-7024 by April 21. By invitation only, please do not forward without consent.

Niagara's Injury Prevention and Substance Misuse Community Forum

May 5, 2011 8:30am-1:00pm

Keynote Speaker: Dr. Jessica Hopkins, Associate Medical Officer of Health, Niagara Region Public Health

Breakout Sessions will focus on:

- Falls prevention (across the lifespan)
- Road safety
- Suicide prevention
- Alcohol pre-drinking prevention
- Prescription drug misuse

Registration begins at 8:30am
Amic's Banquet and Conference Centre
2740 Merriville Hwy, Thorold

Lunch will be provided.

To register please fill out the attached form and email to Brenda Tucker at: brenda.tucker@niagararegion.ca or fax to her attention at 905-688-7024 by April 21. By invitation only, please do not forward without consent.

'Stop an Injury B4 it Happens'

Lead

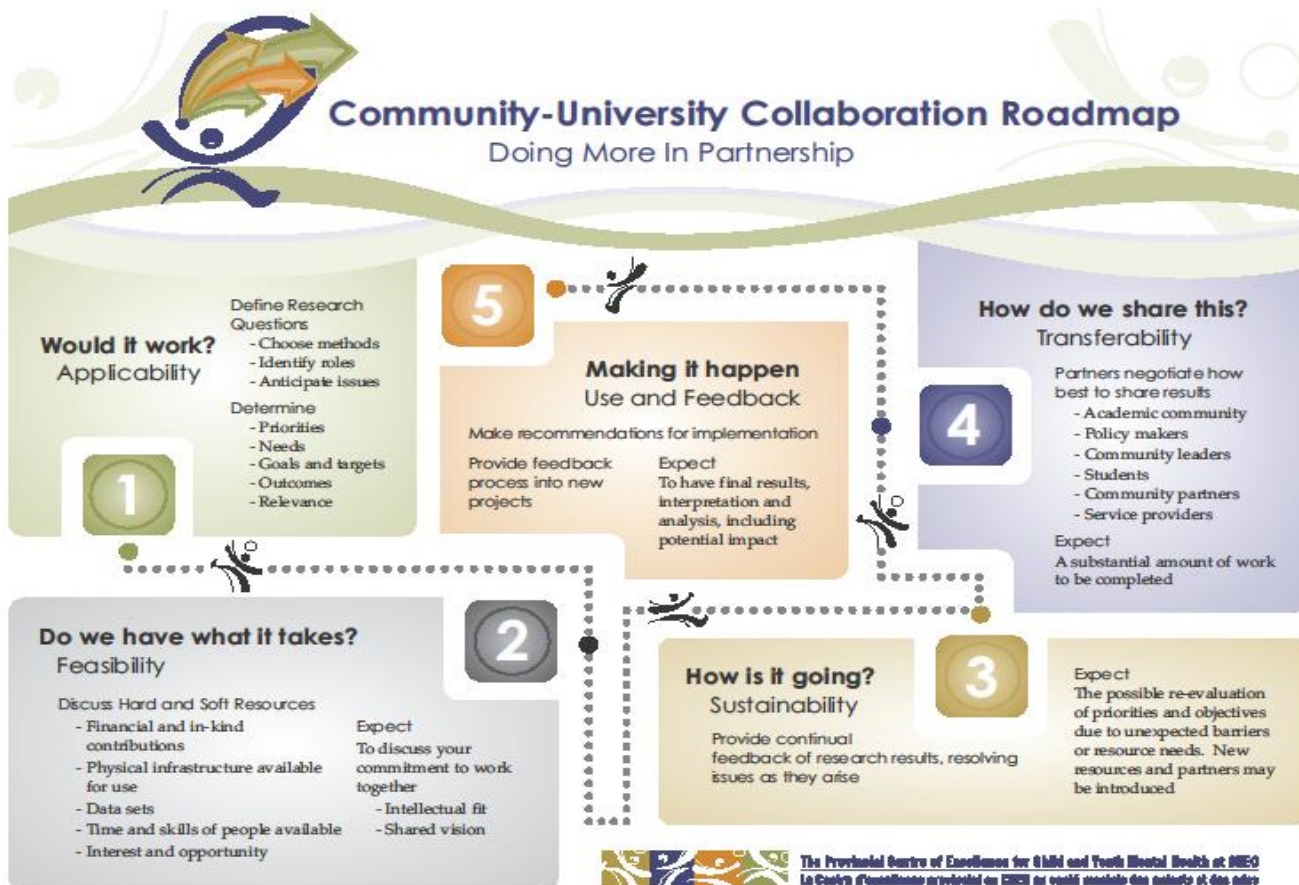


Community-University Collaboration Toolkit (CHEO, 2006)

Inspire

Engage

Lead





Applicability

(Would it work?)

Public Health

- Goal to prepare the nursing workforce for public health nursing
- Relevant to meeting the PH core competencies and discipline specific public health nursing competencies

University

- Goal to provide clinical learning experiences congruence with BScN program curriculum
- Outcome to prepare graduates in for community~public health nursing practice



Feasibility

(Do we have what it takes?)

Public Health

- Current project and part of the PHN's assignment
- Match projects with the course ends-in-views
- Role modeling of PHN competencies

University

- Faculty bring their scholarship in teaching
- Opportunity for students to enact PHN roles and responsibilities
- PHNs are tutors



Sustainability

(How is it going?)

Public Health

- Projects are elements of a comprehensive strategy
- The Community-University partnership reviewed annually
- Expands partnerships with clients

University

- Course and community clinical placement annual evaluations
- Shapes curriculum renewal



Transferability

(How do we share this?)

Public Health

- Community project outcomes are shared with community partners
- Public health nurses and other public health professionals

University

- Clinical experiences are shared with peers and other faculty
- Students bring this learning to other theory and professional practice courses



Use and Feedback *(Making it happen)*

Public Health

- Inform policy development/strategic planning for organizations (PH & Community)
- Strengthen the role of agency advisors
- Expand clinical learning opportunities

University

- Expands the faculty's scholarship of teaching
- Broadens students' view of nursing practice and interest in public health nursing



Enabling Factors

- Traditional setting
- Historical clinical placement relationships
- Evidence based learning environment
- Developed orientation
- Agency advisor with public health nursing experience
- Excellence in BScN education
- Collaborative evaluation



Challenging Factors

- Competing demands
- Curriculum under development
- Not all Faculty experienced in public health
- Insufficient time to apply concepts
- Limited number of Public Health community placements
- Shift in PHN practice



Next Steps

- Increase in clinical hours
- Re-examine the nature of projects
- Explore the ideas of social learning model/
collaborative learning units



QUESTIONS???

Inspire

Engage

Lead



References

Canadian Association Schools of Nursing. (2010). Quality Community Health Nursing Clinical Placements. Ottawa: Author

Canadian Association Schools of Nursing. (2010). The Case for Healthier Canadians: Nursing workforce education for the 21st century. Ottawa: Author

The Provincial Centre of Excellence for Child & Youth Mental Health at CHEO. (2006). Doing More in Partnership: A toolkit for Community-University Collaboration. Ottawa, ON.